

Easy to operate, reliable CO2 Lasers



Easy Control

Control your Desktop CO2 Laser with ease using the supplied software. Import files via USB Stick and edit on the fly.



Software Included

With all desktop and pro models, we supply Lightburn CAD/CAM software, easy to use and with an excellent array of valuable features.



80W RECI Laser Tubes

As standard on all of our desktop lasers, we include genuine RECI laser tubes. As we are the UK's main RECI dealer we also hold plenty of stock/spares.



Motorised Z Adjustment

This allows you to process thicker items in your desktop laser cutter. Its motorised Z is perfect for engraving trinkets and blanks.



Honeycomb Bed

Honeycomb cutting bed, perfect for stopping small intricate items from falling through.



Compact Cutting System

With its compact 500 x 300 mm (this model is closest to A3 paper size) cutting zone, the desktop model offers a small package that still packs a punch.



Rotary Device

We supply rotary devices with all of our desktop laser cutters, perfect for engraving glasses, tubes and anodised yeti cups. Personalisation has never been easier.



Camera Support (Upgrade)

Why not upgrade to our camera system with full support in Lightburn software? Perfect for tracing or positioning ask the team about this upgrade.



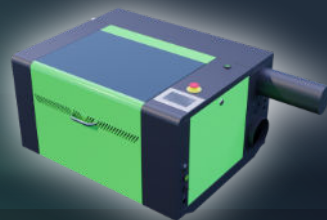
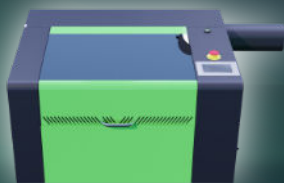
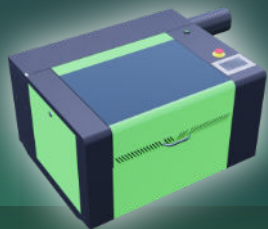
Genuine S&A Chillers

All of our laser cutters come supplied with a suitable S&A chiller with upgrades available.



Air Assist

The desktop laser cutting and engraving system come with integrated air assist enhancing the output by removing debris from the cutting and engraving area.



Standard Extraction

Our Lasertech CO2 Laser Cutters come with vent-to-atmosphere extraction systems, however, we also supply both Purex and BOFA air filtration units (upgrade).



Safety Glasses

We supply a set of safety glasses with all of our machines. If you require more than the standard set, please let us know.



Installation & Training

Our installation team carries out installation and safety training, giving you the confidence to use the machine before they leave.



Excellent After Sales Support

Our after-sales service is UK based and available to all of our customers if needed. Lifetime technical support via email and telephone.



UK Warranty

All Lasertech laser cutters come with our excellent 12-month parts & labour warranty (does not include consumables).

Lightburn Camera (Optional) Fully compatible.

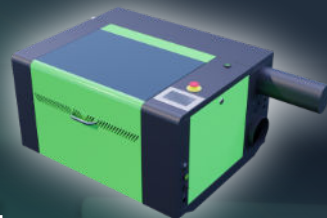
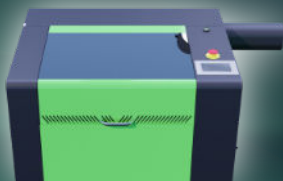


Great for **positioning your artwork** onto your material rather than guessing and doing things by eye only. It's also a very efficient way of optimising and using all of your offcuts and scrap.



With the **built-in tracing functions of Lightburn** you can combine these with the camera to give you **powerful object tracing capabilities**. Got a logo on paper, easily trace it using your Lightburn camera and convert to cut paths.

“Perfect for tracing designs and logos in the classroom, business or at home”

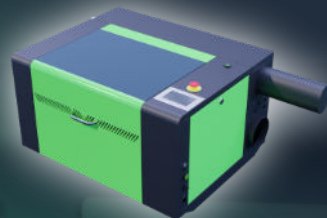
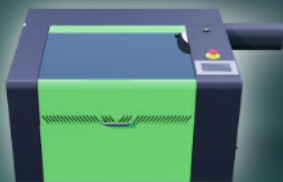
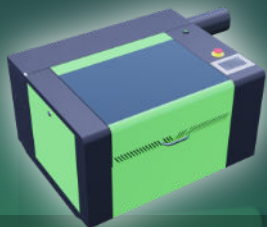


Easy to use, reliable CO2 Lasers

Main features



| | |
|-----------------------------|--|
| Bed type | Honeycomb bed system |
| Motorised Z table (up/down) | Yes |
| Industrial water chiller | Genuine S&A Water Chillers Included |
| CO2 laser tube | RECI Laser Tubes – 80W |
| Air assist | Yes (helps to remove debris and cools material) |
| Rotary device | Included |
| Safety glasses | Included |
| Extraction system | Yes – Standard vent to atmosphere, with upgrades to a Purex or BOFA filtration system available. |
| Software package | Lightburn Included |
| Safety features | Interlocks, emergency stop, full enclosure |
| Delivery | UK Mainland included. (offloading and siting option available if required). |
| Installation | Our professional installation team will fully commission your new machine – It is the customer's responsibility to ensure they have the correct electrical and air outputs (we will advise you on what is required). |



FAQ's

Why choose the desktop model?

Our Lasertech Desktop laser cutting and engraving machine is perfect for smaller workshops, or for customers who only need a smaller work area of 500 x 300 mm. It's reliable and comes with impressive performance in a small package.

Do you supply software with the machine?

Yes, all of our Desktop laser cutters come with impressive software called Lightburn. You can download a free trial from their website. Better software for your laser cutter than RDworks which is the usual standard with RUIDA-based control systems.

Is training and delivery included?

All of our laser cutters include our standard UK mainland delivery and include full training on your new machine and how to operate the software to send jobs to be cut or engraved.

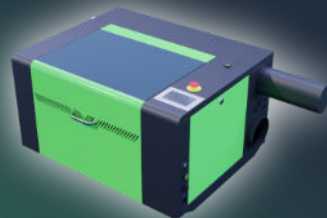
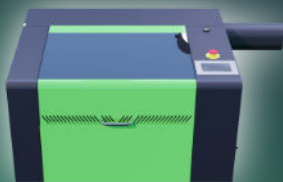
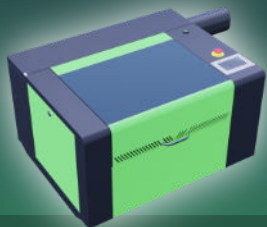
Do they come with extraction?

Yes, our Desktop Laser comes with our standard vent-to-atmosphere extraction, although this is usually ok for most customers, we also supply optional filtration systems that have a set of filters to filter out particulates from the cutting process (our educational and office-based customers usually opt for this).

Do you supply materials, consumables and parts?

You can purchase your materials from a wide range of suppliers, in fact, we also supply a selection of acrylic materials that are suitable for laser cutting over at our parts and consumables site www.mantechparts.co.uk

all cut down to the appropriate size (free of charge) for the bed size of your machine. We also stock a wide range of spares and consumables such as mirror packs, lens, laser tubes and more.



Dimensions

| | |
|--------|--|
| Model | Desktop |
| Length | 1250 mm (with tube) - 970 mm (without it fitted) |
| Depth | 790 mm |
| Height | 560 mm |
| Weight | Appx 90kg |

